



Design 1 – Lookbook 18

SHIRT

SUMMER SOFTNESS

SHIRT · SUMMER SOFTNESS

Design 1 – Lookbook 18



Size 36/38 (40/42, 44/46, 48/50)

Instructions are given for first size. Figures in parenthesis refer to larger sizes. When only one figure is given, it applies to all sizes.

Materials: **300 (350, 350, 400) g** of Lana Grossa **Summer Softness** (80% organic cotton, 20% superfine Merino wool; 130 m/50 g) in Cream (**col 2**) and **50 (50, 100, 100) g** in Pumpkin (**col 6**). Size 5 and 7 mm needles; size 5 mm circular needle.

Rib patt: P1, k1.

St st: K on RS, p on WS.

Main patt: **Rows 1 – 6:** Using Cream, work in St st. **Row 7 (RS):** Using Pumpkin, knit all sts. **Row 8 (WS):** Using Pumpkin, p1, k2tog across row to last st, p1. **Row 9 (RS):** Using Cream, k1, k1f&b in each st across to last st, k1. **Row 10 (WS):** Using Cream, purl all sts. **Rows 11 – 14:** Using Cream, work in St st.

Gauge: 17 sts and 22 rows = 10 x 10 cm in St st on size 7 mm needles.

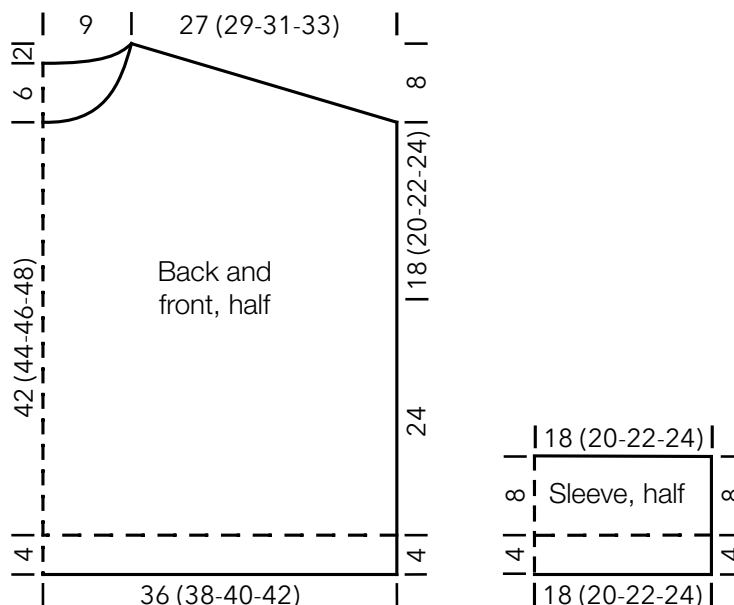
Back: With size 5 mm needles and Cream cast on 122 (128, 134, 140) sts. Work in rib patt for 4 cm, ending with a

WS row. Change to size 7 mm needles. Work in main patt for 24 cm. Place marker in first and last st on last WS row to indicate beg of armholes. Cont in main patt until piece meas 18 (20, 22, 24) cm from armhole markers, ending with a WS row. Shape shoulders and neck: At each shoulder edge bind off 5 sts 9 (6, 3, 0) times, 6 sts 0 (3, 6, 9) times. **At same time**, when piece meas 6 cm from beg of shoulder shaping, shape neck as foll: Next row (RS): Bind off center 28 sts. Working each side separately, dec 1 st at each neck edge every row 2 times. No sts rem.

Front: Work same as back to shoulder shaping. Shape shoulders same as for back. **At same time**, on first row of shoulder shaping, shape neck as foll: Bind off center 16 sts. Working each side separately, bind off 1 st at each neck edge 8 times. No sts rem.

Sleeves: With size 5 mm needles and Cream cast on 64 (70, 76, 82) sts. Work in rib patt for 4 cm, ending with a WS row. Change to size 7 mm needles. Work in main patt for 8 cm. Bind off all sts.

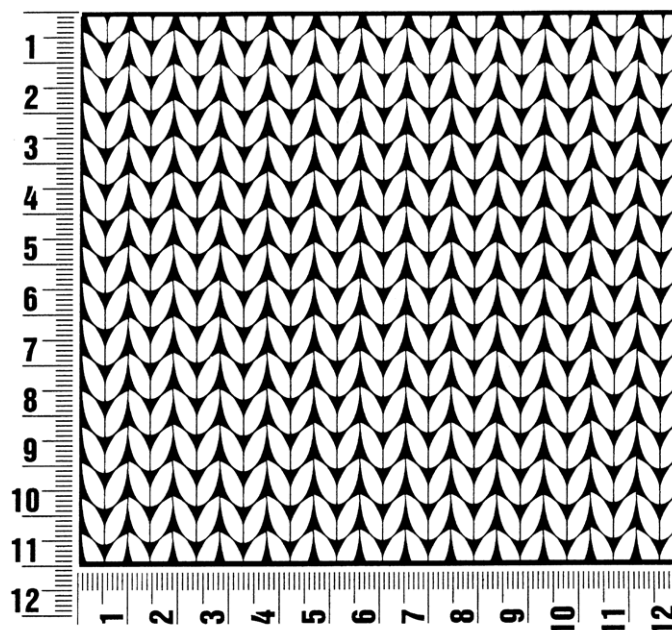
Finishing: Sew shoulder seams. **Neckband:** With size 5 mm circular needle and Cream, pick up and k 78 sts evenly around neck edge. Place beg of rnd marker and join for working in rnds. Work in rib patt for 2 cm. Bind off all sts. Sew on sleeves between markers. Sew side and sleeve seams.



Gauge Swatch

Before you begin ...

...make a gauge swatch. Use the recommended needles, yarns and pattern stitch for your gauge swatch. It should measure approx. 12 cm x 12 cm. Cast-on and bind-off rows, as well as selvedge stitches should not be included in the measurement. Pin your swatch and block it as you would the finished pieces of the garment. Count stitches and rows over 10 cm. If your gauge swatch is too small, switch to larger needles. If your gauge swatch is too big, switch to smaller needles.



Abbreviations

beg = begin(ning) · **ch** = chain · **cont** = continue · **dec** = decreas(e)(ing) · **inc** = increas(e)(ing) · **k** = knit · **kwise** = as if to knit
meas = measures · **M1L** = lift strand between sts from front to back and knit this strand through the back loop · **M1R** = lift strand between sts from the back and knit this strand through the front loop · **patt** = pattern · **pm** = place marker · **p** = purl
pwise = as if to purl · **rem** = remain(ing) · **rep** = repeat(s) · **rev St st** = reverse stockinette stitch · **rnd(s)** = round(s) · **RS** = right side · **sc** = single crochet · **skp** = slip 1 stitch as if to knit, knit 1 stitch, pass slipped stitch over knitted stitch · **sk2p** = slip 1 stitch as if to knit, knit 2 together, pass slipped stitch over knitted stitch · **s2kp** = slip 2 stitches as if to knit, k 1 stitch, pass slipped stitches over knitted stitch · **sl** = slip · **st(s)** = stitch(es) · **St st** = stockinette stitch · **tbl** = through the back loop · **tog** = together · **wyib** = with yarn in back of work · **wyif** = with yarn in front of work · **WS** = wrong side · **yo(s)** = yarn over(s)

Publisher's Info

Publisher: Lana Grossa GmbH, Gaimersheim, www.lana-grossa.com
Photographer: Nicolas Olonetzky, www.olonetzky.com