



© Lana Grossa GmbH

Design 29 – Nordic Knits 4

PULLOVER NEBBIA

PULLOVER · NEBBIA

Design 29 – Nordic Knits 4



Size 36/38 (40/42, 44/46, 48/50)

Instructions are given for first size. Figures in parenthesis refer to larger sizes. When only one figure is given, it applies to all sizes.

We recommend that you read the instructions all the way through before you begin. To make the pattern easier to follow, highlight or circle the numbers pertaining to your size before getting started.

Materials: 250 (300, 350, 400) g of Lana Grossa **Nebbia** (55% superfine Merino wool, 45% baby alpaca; 170 m/50 g) in Beige (**col 13**), 50 g each in Copper (**col 1**), Apple (**col 10**) and Camel (**col 12**). Size 4 and 4.5 mm circular needles, each 80 – 100 cm long; short size 4 and 4.5 mm circular needles and/or double-pointed needles [dpns]. NOTE: Short size 4 and 4.5 mm circular needles/dpns are not required when working Magic Loop. 18 stitch markers; stitch holders or waste yarn to hold sts.

St st in rows: K on RS, p on WS.

St st in rnds: K every rnd.

Rib patt: K1, p1. On foll rnds work sts as they appear.

Fair Isle bands: Work in St st in Fair Isle technique according to chart. Read all rnds from right to left. Work rnds 1 – 6 once. Work first band in Copper, second band in Apple, third band in Camel.

Kfb: Knit into front, then knit into back of the same stitch, then drop it from the needle – 1 stitch increased.

Gauge: 18 sts and 22 rows/rnds = 10 x 10 cm in St st and Fair Isle bands on size 4.5 mm needles.

Before you start, make sure to knit a gauge swatch to check if you can achieve the correct gauge using the recommended needle size. If needed, adjust your needle size accordingly.

Notes: This pullover is worked seamlessly from the top down. Stitches for the neckband are cast on first and the neckband is worked in 1x1 ribbing. The body is worked in Stockinette Stitch, the yoke features three Fair Isle bands in three different colors. Evenly spaced increases to shape the yoke are worked in the rounds between the Fair Isle bands. Once the bottom of the yoke has been reached, a few rows are worked across the back stitches only to lengthen the back and provide a better fit. Body and sleeves are then divided, stitches are cast on for the underarms and the sleeve stitches are put on hold. The body is worked down to the hem, which is worked in a 1x1 ribbing. The held sleeve stitches are returned to the needle and the sleeves are first worked back and forth in rows, while at the same time, stitches are picked up in each of the increased stitches at the back and in each of the cast-on underarm stitches. The sleeve is then worked in the round with a final decrease round before the cuff. The cuffs are worked in a 1x1 ribbing.

Neckband: Using size 4 mm circular needle and Beige cast on 108 sts. PM0 for beg of rnd and join for working in rnds. Work in rib patt for 4 cm. Purl 1 rnd. Change to size 4.5 mm circular needle.

Next inc rnd: *[K2, M1R] 3 times, k3, M1R*, work *-* 12 times = 156 sts.

Using Copper, work first Fair Isle band: Work rnds 1 – 6 of chart, placing markers on last rnd as foll: *[K9, PM] 2 times, k8, PM*, work *-* 5 times, [k9, PM] 2 times, k8, SM0.

Using Beige, knit 12 rnds, increasing 18 sts on rnd 2, 4, 6, 8 and 10 as foll: [Knit to M, SM, M1R] 18 times = 246 sts.

Using Apple, work second Fair Isle band: Work rnds 1 – 6 of chart.

Using Beige, knit 12 rnds, increasing 18 sts on rnd 2, 4, 6, 8 and 10 as foll: [Knit to M, SM, M1R] 18 times = 336 sts.

Using Camel, work third Fair Isle band: Work rnds 1 – 6 of chart.

Using Beige, knit 4 (6, 8, 10) rnds.

Size 36/38:

Work no further incs, remove all markers, except M0.

Size 40/42:

Knit 4 rnds. Increase 18 sts on rnd 2 foll: [Knit to M, SM, M1R] 18 times = 354 sts. Inc 4 sts on rnd 4 as foll: [K88, M1R, k89, M1R] 2 times = 358 sts. Remove all markers, except M0.

Size 44/46:

Knit 6 rnds. Increase 18 sts on rnd 2 and 4 as foll: [Knit to M, SM, M1R] 18 times = 372 sts. Inc 8 sts on rnd 6 as foll: [K46, M1R, k47, M1R] 4 times = 380 sts. Remove all markers, except M0.

Size 48/50:

Knit 8 rnds. Increase 18 sts on rnd 2, 4, 6 and 8 as foll: [Knit to M, SM, M1R] 18 times = 408 sts. Remove all markers, except M0.

Back: To lengthen the back, work across 98 (105, 112, 122) back sts only, back and forth in rows and inc 1 st in last st of every row. Turn work.

Beginning with a WS row and ending with a RS row, work 10 rows in St st, increasing (kfb) 1 st in last st of every row = 108 (115, 122, 132) sts for back. Do not turn after last RS row.

Body: Place next 70 (74, 78, 82) sts on holder for sleeve, cast on 5 sts for underarm, k98 (105, 112, 122), place next 70 (74, 78, 82) sts on holder for sleeve, cast on 5 sts for underarm, k108 (115, 122, 132) = 216 (230, 244, 264) sts for body. Join for working in rnds and work in St st for 26 cm. Change to size 4 mm circular needle. Work in rib patt for 6 cm. Bind off all sts.

Left sleeve: Return held sleeve sts to size 4.5 mm circular needle and with RS facing rejoin yarn. Work in St st, back and forth in rows for 10 rows as foll:

Row 1 (RS): K30 (32, 34, 36) kfb in next 10 sts, k30 (32, 34, 36), pick up and k 1 st in increased st at back.

Row 2 (WS): Purl.

Row 3: Pick up and k 1 st in underarm cast-on, knit to end, pick up and k 1 st in increased st at back.

PULLOVER · NEBBIA

Design 29 – Nordic Knits 4



Row 4: Purl.

Rep rows [3 and 4] 3 more times.

Next row (RS): Pick up and k 1 st in underarm cast-on, knit to center of underarm = 90 (94, 98, 102) sts. PM for beg of rnd, and work St st for 20 cm.

Next dec rnd: K2tog 44 (46, 48, 50) times, k2 = 46 (48, 50, 52) sts.

Change to size 4 mm circular needle. Work in rib patt for 7 cm. Bind off all sts.

Right sleeve: Work same as left sleeve. When working in rows, pick up and k 1 st in increased sts at back at beg of RS rows, pick up and k 1 st in underarm cast-on at end of RS rows.

Finishing: Wash your new pullover, pin to measurements and let dry. If needed, close small gaps at underarms.

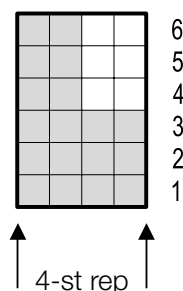
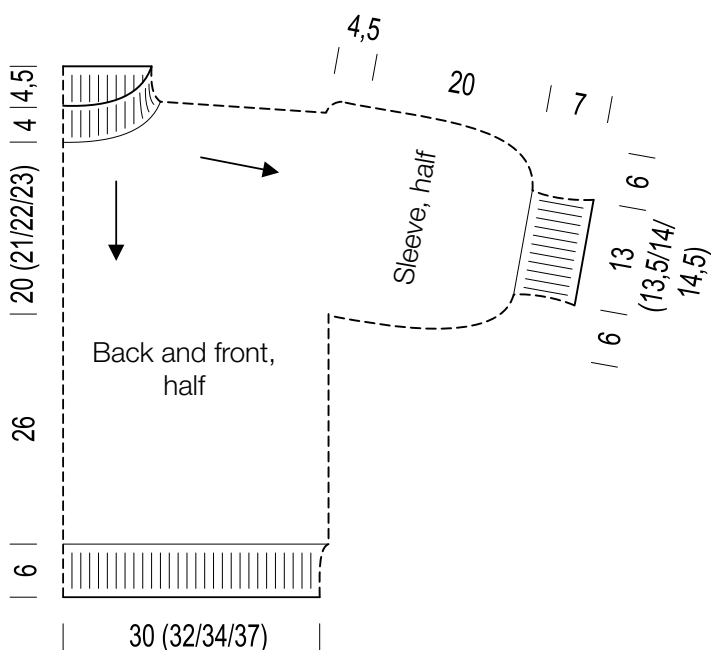


Chart key:

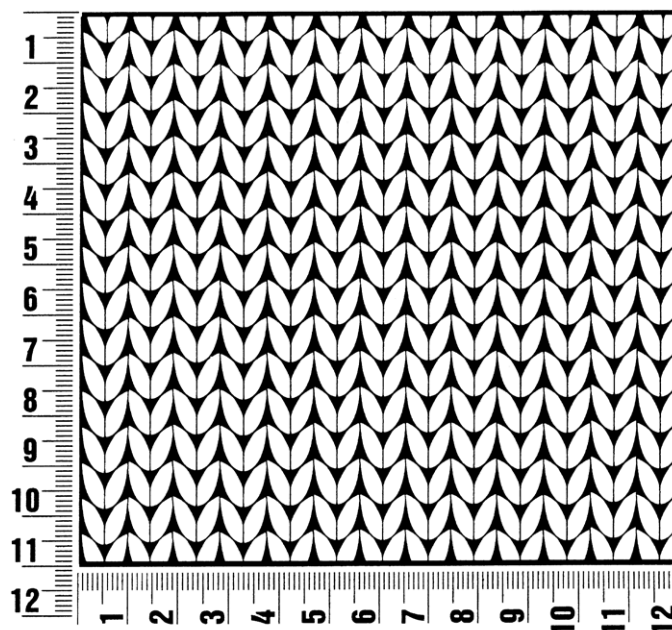
□ = k1 in Beige

■ = k1 in Copper for 1st Fair Isle band, in Apple for 2nd Fair Isle band, in Camel for 3rd Fair Isle band

Gauge Swatch

Before you begin ...

...make a gauge swatch. Use the recommended needles, yarns and pattern stitch for your gauge swatch. It should measure approx. 12 cm x 12 cm. Cast-on and bind-off rows, as well as selvedge stitches should not be included in the measurement. Pin your swatch and block it as you would the finished pieces of the garment. Count stitches and rows over 10 cm. If your gauge swatch is too small, switch to larger needles. If your gauge swatch is too big, switch to smaller needles.



Abbreviations

beg = begin(ning) · **ch** = chain · **cont** = continue · **dec** = decreas(e)(ing) · **inc** = increas(e)(ing) · **k** = knit · **kwise** = as if to knit
meas = measures · **M1L** = lift strand between sts from front to back and knit this strand through the back loop · **M1R** = lift strand between sts from the back and knit this strand through the front loop · **patt** = pattern · **pm** = place marker · **p** = purl
pwise = as if to purl · **rem** = remain(ing) · **rep** = repeat(s) · **rev St st** = reverse stockinette stitch · **rnd(s)** = round(s) · **RS** = right side · **sc** = single crochet · **skp** = slip 1 stitch as if to knit, knit 1 stitch, pass slipped stitch over knitted stitch · **sk2p** = slip 1 stitch as if to knit, knit 2 together, pass slipped stitch over knitted stitch · **s2kp** = slip 2 stitches as if to knit, k 1 stitch, pass slipped stitches over knitted stitch · **sl** = slip · **st(s)** = stitch(es) · **St st** = stockinette stitch · **tbl** = through the back loop · **tog** = together · **wyib** = with yarn in back of work · **wyif** = with yarn in front of work · **WS** = wrong side · **yo(s)** = yarn over(s)

Publisher's Info

Publisher: Lana Grossa GmbH, Gaimersheim, www.lana-grossa.com
Photographer: Nicolas Olonetzky, www.olonetzky.com