



© Lana Grossa GmbH

Design 33 – Merino Edition 03

CARDIGAN
COOL WOOL BIG / COOL WOOL BIG VINTAGE

CARDIGAN · COOL WOOL BIG / COOL WOOL BIG VINTAGE

Design 33 – Merino Edition 03



Size 36/38 (40/42, 44/46, 48/50, 52/54)

Instructions are given for first size. Figures in parenthesis refer to larger sizes. When only one figure is given, it applies to all sizes.

Materials: 450 (500, 500, 550, 600) g of Lana Grossa **Cool Wool Big** (100% superfine Merino wool; 120 m/50 g) in Oyster (col 1016) or 450 (500, 500, 550, 600) g of Lana Grossa **Cool Wool Big Vintage** (100% superfine Merino wool; 120 m/50 g) in Plum (col 7165). Size 3.5 and 4.5 mm needles; one set size 4.5 mm double-pointed needles [dpns].

Chart patt: Multiple of 10 + 1. Numbers at right edge of chart indicate RS rows, numbers at left edge of chart indicate WS rows. WS rows are shown in grey on chart. Rep rows 1 – 6.

St st: K on RS, p on WS.

6-stitch front band: On every row: [K1, sl 1 pwise wyif] 3 times.

German short row [gsr]: Turn work after having worked the number of sts indicated in pattern. Sl 1 st as if to purl with yarn in front of work, bring yarn to back of work over top of the needle and pull it very tightly; this will rotate the st to the back of the needle, creating a 'double stitch' [dbl st]. Complete the gsr by working both loops of the 'double stitch' tog as you come to them.

Rib patt: Rnd 1: * K2, p2, k2; rep from * around. Rnd 2: Knit. Rep rnds 1 and 2 for rib patt.

Gauges: On size 4.5 mm needles: 19 sts and 28 rows = 10 x 10 cm in St st; 24 sts and 30 rows = 10 x 10 cm in rib patt.

Cardigan: Knit in one piece, starting at bottom edge of back. Fronts are then worked separately down to bottom edge.

Back: With size 3.5 mm needles cast on 93 (103, 113, 123, 133) sts. Knit 3 rows, purl 1 row. Change to size 4.5 mm needles. Next row (RS): Selvage st; work row 1 of chart = work patt rep 9 (10, 11, 12, 13) times, work to end of chart = 1 st; selvage st. NOTE: Selvage sts are not included on chart. Maintaining selvage sts, work chart for a total of 30 rows. Maintaining selvage sts, work in St st for 43 (43, 44.5, 44.5, 46) cm, ending with a WS row. Next row (RS): K1f&b in center st, work to end. Next, work **left front** first as foll: Next row (WS): Selvage st, p40 (45, 50, 55, 60), work 6-st front band and turn, leaving rem 47 (52, 57, 62, 67) sts on hold for right front. Shape shoulder with short-rows: Next row (RS): 6-st front band, k5 (5, 10, 10, 15), turn. Next row (WS): Dbl st, patt to end. Next row (RS): 6-st front band, knit to dbl st, work dbl st, k5, turn. Next row (WS): Dbl st, patt to end. Rep last 2 rows 5 (5, 6, 6, 7) more times. Next row (RS): Patt to end of row. Maintaining 6-st front band, work in St st for 43 (43, 44.5, 44.5, 46) cm, ending with a WS row. Matching patt to back and maintaining 6-st front band, work rows 1 – 30 of chart. Knit 3 rows. Bind off all sts pwise on next WS row and at same time, p2tog center 2 sts of 6-st front band. **Right front:** Return 47 (52, 57, 62, 67) held right front sts to needle and with WS facing rejoin yarn. Complete as given for left front, reversing shoulder shaping and patt placement.

Sleeves: Place markers 18 (19, 21, 22.5, 24) cm down from shoulders on fronts and back [see * on schematic]. With dpns and RS facing, pick up and k 66 (72, 78, 84, 90) sts evenly between markers. Pickup ratio is 2 sts over 3 rows. Place beg of rnd marker and join for working in rnds. Work in rib patt for 35 (35, 33, 33, 33) cm. Next dec rnd: K2tog around = 33 (36, 39, 42, 45) sts. Purl 1 rnd, knit 1 rnd. Bind off all sts kwise.

Finishing: Carefully weave in all ends. Sew side seams.

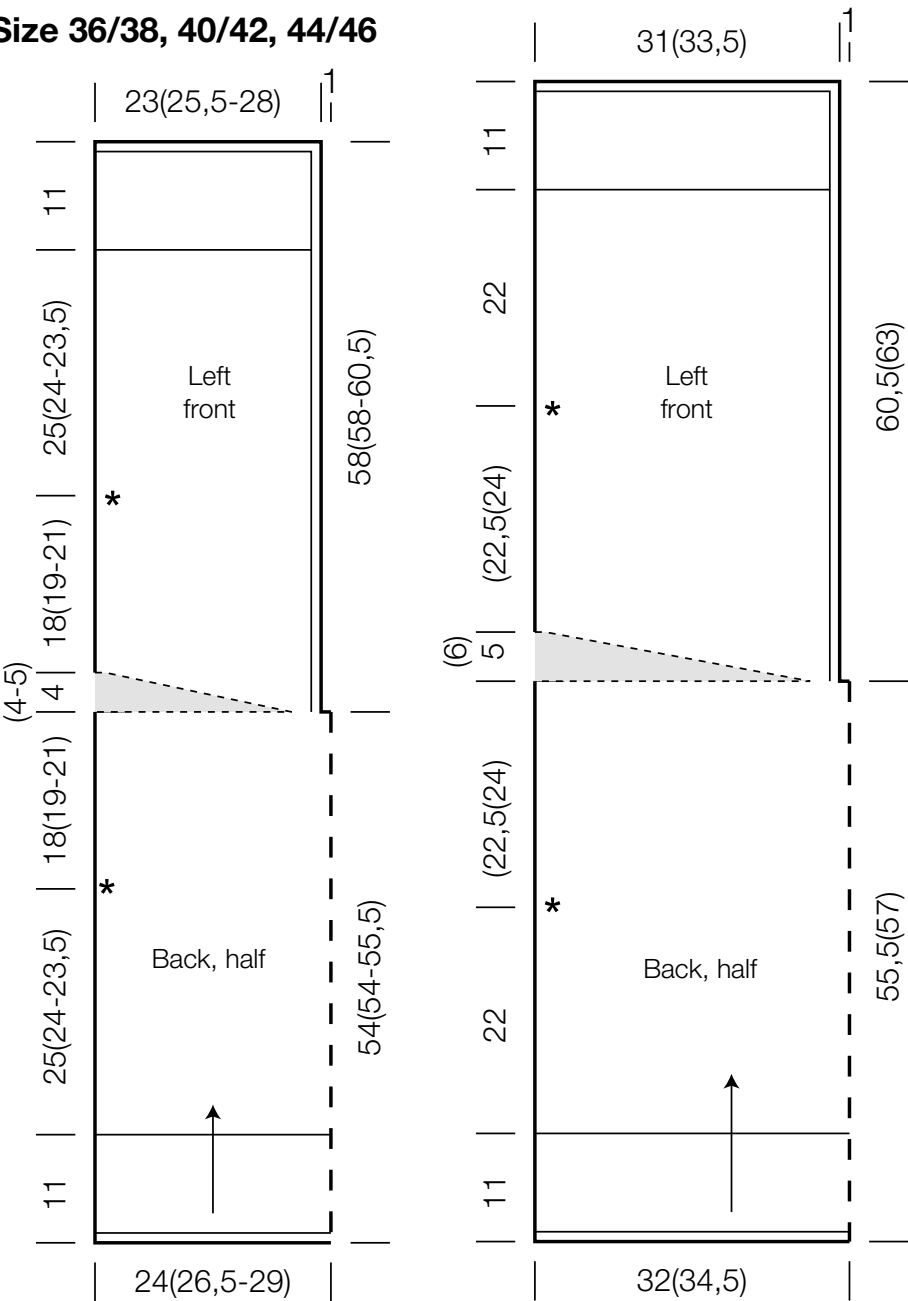
CARDIGAN · COOL WOOL BIG / COOL WOOL BIG VINTAGE

Design 33 – Merino Edition 03



Size 48/50, 52/54

Size 36/38, 40/42, 44/46



Chart

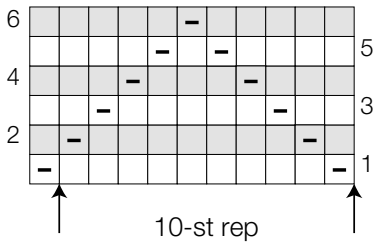


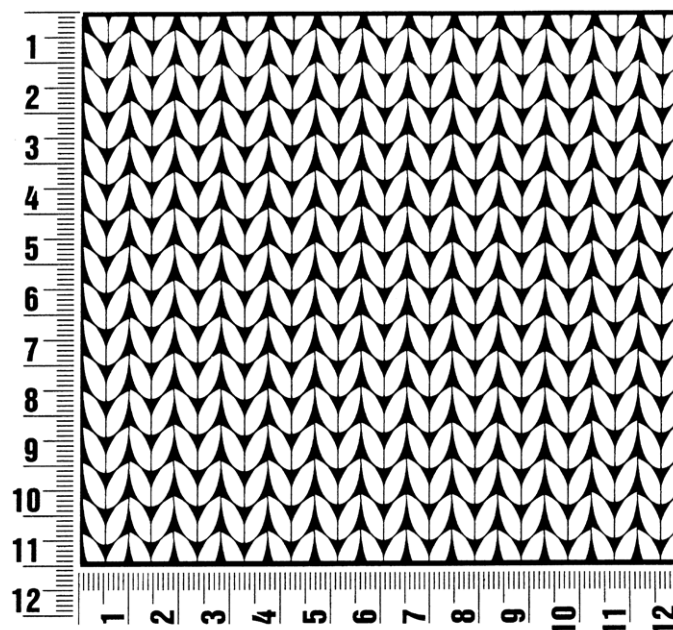
Chart key:

- = p1 on RS
- = k1 on RS
- ▬ = k1 on WS
- ▮ = p1 on WS

Gauge Swatch

Before you begin ...

...make a gauge swatch. Use the recommended needles, yarns and pattern stitch for your gauge swatch. It should measure approx. 12 cm x 12 cm. Cast-on and bind-off rows, as well as selvage stitches should not be included in the measurement. Pin your swatch and block it as you would the finished pieces of the garment. Count stitches and rows over 10 cm. If your gauge swatch is too small, switch to larger needles. If your gauge swatch is too big, switch to smaller needles.



Abbreviations

beg = begin(ning) · **ch** = chain · **cont** = continue · **dec** = decreas(e)(ing) · **inc** = increas(e)(ing) · **k** = knit · **kwise** = as if to knit
meas = measures · **M1L** = lift strand between sts from front to back and knit this strand through the back loop · **M1R** = lift strand between sts from the back and knit this strand through the front loop · **patt** = pattern · **pm** = place marker · **p** = purl
pwise = as if to purl · **rem** = remain(ing) · **rep** = repeat(s) · **rev St st** = reverse stockinette stitch · **rnd(s)** = round(s) · **RS** = right side · **sc** = single crochet · **skp** = slip 1 stitch as if to knit, knit 1 stitch, pass slipped stitch over knitted stitch · **sk2p** = slip 1 stitch as if to knit, knit 2 together, pass slipped stitch over knitted stitch · **s2kp** = slip 2 stitches as if to knit, k 1 stitch, pass slipped stitches over knitted stitch · **sl** = slip · **st(s)** = stitch(es) · **St st** = stockinette stitch · **tbl** = through the back loop · **tog** = together · **wyib** = with yarn in back of work · **wyif** = with yarn in front of work · **WS** = wrong side · **yo(s)** = yarn over(s)

Publisher's Info

Publisher: Lana Grossa GmbH, Gaimersheim, www.lana-grossa.com

Photographer: Nicolas Olonetzky, www.olonetzky.com