



© Lana Grossa GmbH

Design 23 – Nordic Knits 3

CARDIGAN ECOPUNO & SILKHAIR

CARDIGAN · ECOPUNO & SILKHAIR

Design 23 – Nordic Knits 3



Size 36/38 (40/42, 44/46, 48/50)

Instructions are given for first size. Figures in parenthesis refer to larger sizes. When only one figure is given, it applies to all sizes.

Materials: **300 (350, 400, 450) g** of Lana Grossa **Ecopuno** (72% cotton, 17% Merino wool, 11% baby alpaca; 215 m/50 g) in Pearl Beige (**col 66**); **150 (200, 200, 250) g** of Lana Grossa **Silkhair** (70% superkid mohair, 30% silk; 210 m/25 g) in Grey Blue (**col 196**). Long and short size 4 and 5.5 mm circular needles; cable needle [cn]; five or six 22 mm mother-of-pearl buttons.

Note: Both yarns are held tog throughout.

Rib patt: K1, p1.

Chart A and B: Numbers at right edge of charts indicate RS rows; on WS rows, work sts as they appear or according to chart key. Position sts as given in instructions. Rep rows 1 – 16. **Note:** When working charts, work first and last st as selvage st. Selvage sts are not included on chart.

Chart C: Numbers at right edge of chart indicate rnds. On all rnds not shown on chart work sts as they appear or according to chart key. Work all rnds from right to left. Position sts as given in instructions. Rep rnds 1 – 16.

10-st slip st rib: On every row: [K1, sl 1 pwise wyif] 5 times.

Buttonhole: **Row 1 (RS):** K1, sl 1 pwise wyif, sl 1 pwise wyib, sl 1 st to cn and hold in back of work, sl last st from right needle to left needle, k2tog, yo, sl 2 pwise wyif (st on cn and next st on left needle), [k1, sl 1 pwise wyif] 2 times.

Row 2 (WS): [K1, sl 1 pwise wyif] 2 times, k2tog, sl yo pwise wyif, yo, sl 1 pwise wyif, k1, sl 1 pwise wyif. **Row 3 (RS):** Work in slip st rib, ktbl yo worked on row 1, sl yo worked on row 2 pwise wyif. **Row 4 (WS):** Work in slip st rib, ktbl yo worked on row 2.

Gauge: 19 sts and 24 rows/rnds = 10 x 10 cm in chart patt A – C on size 5.5 mm needles.

Note: Cardigan is worked from the top-down. Back is worked first down to underarm, back sts are then placed on a holder. Sts for right and left front are picked up along cast-on edge of back. After each front has been worked down to underarm, fronts and back are joined and body is worked down to bottom hem. Sts for sleeves are picked up around armhole edge and sleeves are worked in the rnd down to cuff.

Back: With size 5.5 mm circular needle and holding both yarns tog cast on 103 (111, 119, 127) sts. Mark center 35 sts for neck. Next row (RS): Selvage st; work row 1 of chart A = beg at A (B, C, A), work 0 (4, 8, 0) sts to patt rep, work 12-st patt rep 8 (8, 8, 10) times, work 5 (9, 13, 5) sts after patt rep,

ending at A* (B*, C*, A*); selvage st. Maintaining selvage sts, cont to foll chart A until piece meas 21 (22, 23, 24) cm from cast-on, ending with a WS row. Place sts on holder, cut yarn.

Right front: With size 5.5 mm circular needle, holding both yarns tog, RS facing, beginning at shoulder edge and ending at neck marker, pick up and k 34 (38, 42, 46) sts in cast-on edge of back. Break yarns. Rejoin yarns, ready to work a RS row. Next row (RS): Selvage st; work row 1 of chart A = beg at A (B, C, A) work 0 (4, 8, 0) sts to patt rep, work 12-st patt rep to last st; selvage st. Maintaining selvage sts, cont to foll chart A and shape neck as foll: Inc 1 st at neck edge every RS row 3 times, then cast on 2 sts 2 times, 4 sts 1 time, 14 sts 1 time = 59 (63, 67, 71) sts. Work increased sts into patt.

Note: When working shaping, make sure each yo is paired with a decrease. If there are not enough sts to offset a yo with a decrease or vice versa, k1 instead of p2tog or omit yo. After completion of neck shaping, sts are now positioned as foll: Next row (RS): Selvage st; beg at A (B, C, A) work 0 (4, 8, 0) sts to patt rep, work 12-st patt rep 4 (4, 4, 5) times, work slip st rib over last 10 sts. Next 3 rows: Work in patt as set by last row. Next row (RS): Work in patt as established, work first buttonhole. Work rem 4 buttonholes spaced 30 (30, 32, 32) rows apart. Cont in patt until piece meas 21 (22, 23, 24) cm from pick-up row, ending with a WS row. Place sts on holder, cut yarn.

Left front: With size 5.5 mm circular needle, holding both yarns tog, RS facing, beginning at neck marker and ending at shoulder edge, pick up and k 34 (38, 42, 46) sts in cast-on edge of back. Next row (WS): Selvage st; work row 2 of chart B = beg at A* (B*, C*, A*), work 5 (9, 13, 5) sts to patt rep, work 12-st patt rep to last st, selvage st. Maintaining selvage sts, cont to foll chart B, work incs for neck shaping same as for right front = 59 (63, 67, 71) sts. Work increased sts into patt. **Note:** When working shaping, make sure each yo is paired with a decrease. If there are not enough sts to offset a yo with a decrease or vice versa, k1 instead of p2tog or omit yo. After completion of neck shaping, sts are now positioned as foll:

Next row (RS): 9 sts in slip st rib, work 8 sts to patt rep, work 12-st patt rep 3 (3, 3, 4) times, work 5 (9, 13, 5) sts after patt rep, ending at A* (B*, C*, A*); selvage st. Complete as given for right front, omitting buttonholes. Leave sts on needle after last WS row, do not cut yarn. **Join fronts and back:** Sl held back sts and held right front sts to left end of needle holding left front sts. Next row (RS): **For size 36/38:** Patt to last left front st, k2tog, patt to last back st, k2tog, patt to end = 219 sts.

For size 40/42: Patt to last left front st, p2, patt to last back st, p2, patt to end = 237 sts. **For size 44/46:** Patt to last 2 left front sts, p2tog 2 times, patt to last 2 back sts, p2tog 2 times, patt to end = 249 sts. **For size 48/50:** Patt to last left front st, k2tog, patt to last back st, k2tog, patt to end = 267 sts. Cont in patt as established, work rem 4 buttonholes and when working 3rd (= RS) row of last buttonhole, change to size 4

CARDIGAN · ECOPUNO & SILKHAIR

Design 23 – Nordic Knits 3

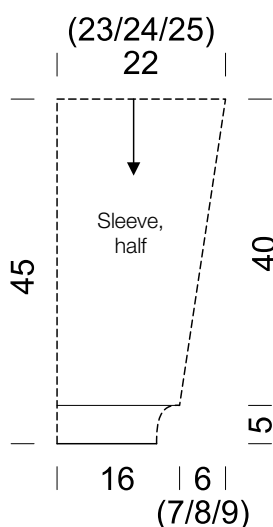
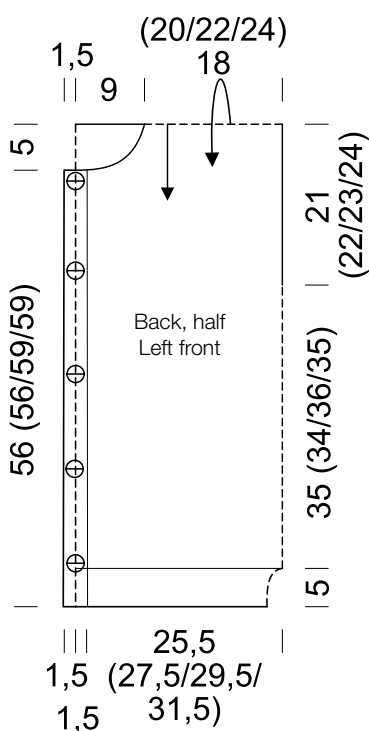


mm circular needle and work as foll: Work slip st rib over first 10 sts, work in rib patt to last 10 sts, work slip st rib over last 10 sts. Work in patt as set by last row for a total of 5 cm. Bind off all sts in rib.

Sleeves: With shorter size 5.5 mm circular needle, holding both yarns tog, beginning and ending at center of underarm, pick up and k 81 (87, 93, 99) sts evenly around armhole edge. Place beg of rnd marker and join for working in rnds. Work rnd 1 of chart C = beg at D (E, F, G), work 2 (5, 8, 11) sts to patt rep, work 12-st patt rep 6 times, work 7 (10, 13, 16) sts after patt rep, ending at D* (E*, F*, G*). Work next 6 (6, 4, 3) rnds of chart. Next dec rnd: P1, skp, patt to last 3 sts, k2tog, p1. Rep dec rnd every 8 (8, 6, 5)th rnd 5 (8, 11, 14) times = 69 sts.

Work even until piece meas 40 cm from underarm. Change to size 4 mm circular needle. Next rnd: Work in rib patt, decreasing 7 sts evenly around as foll: [8 sts in rib patt, ktog or ptog as needed for patt] 6 times, 7 sts in rib patt, ktog or ptog as needed for patt = 62 sts. Cont until a total of 5 cm has been worked in rib patt. Bind off all sts in rib.

Finishing: Pin piece to measurements and block. **Collar:** With shorter size 4 mm circular needle and holding both yarns tog, pick up and k 100 sts evenly along neck edge. Next row (WS): 10 sts in slip st rib, * p1, k1; rep from * to last 11 sts, p1, 10 sts in slip st rib. Work in patt as set by last row until collar meas 10 cm from pick-up row. If desired, work one more buttonhole in collar. Loosely bind off all sts in patt.

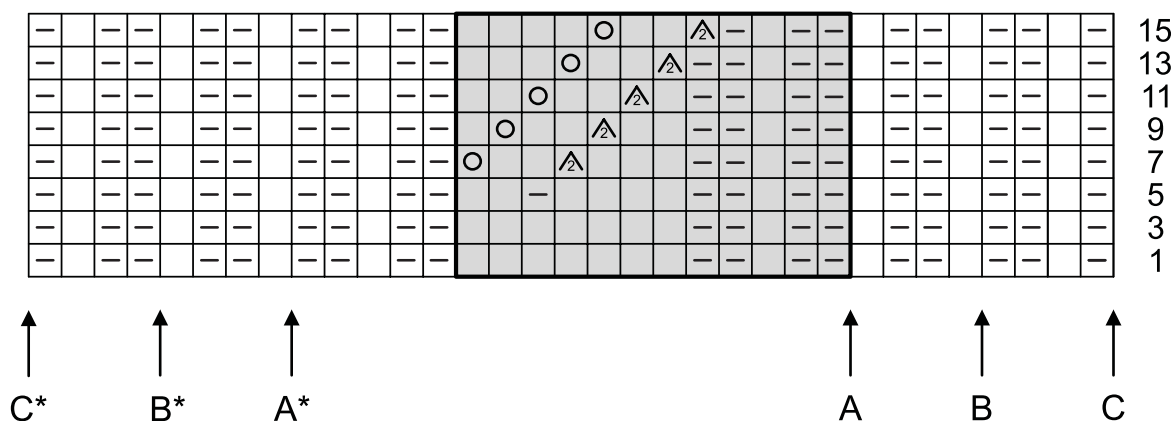


CARDIGAN · ECOPUNO & SILKHAIR

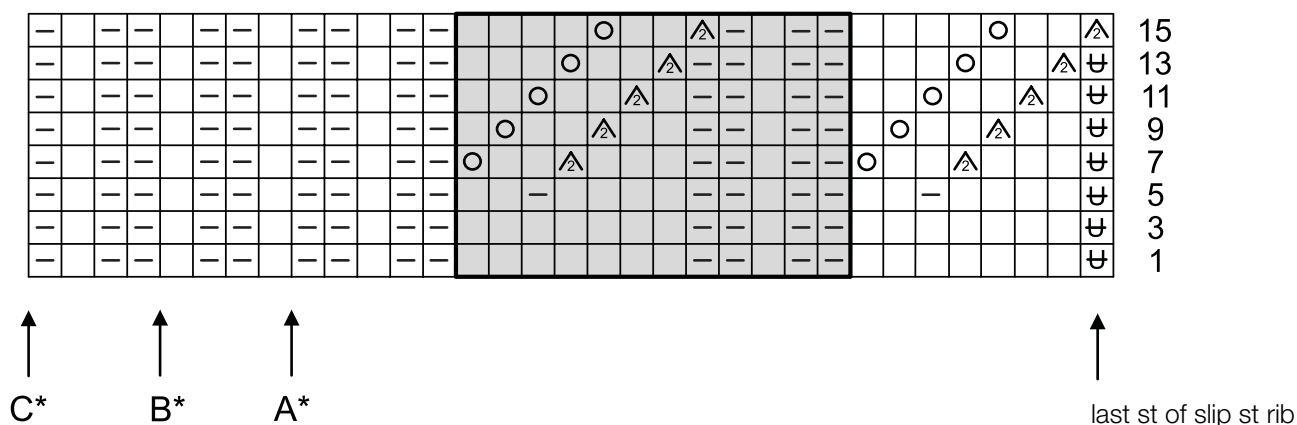
Design 23 – Nordic Knits 3



A



B



C

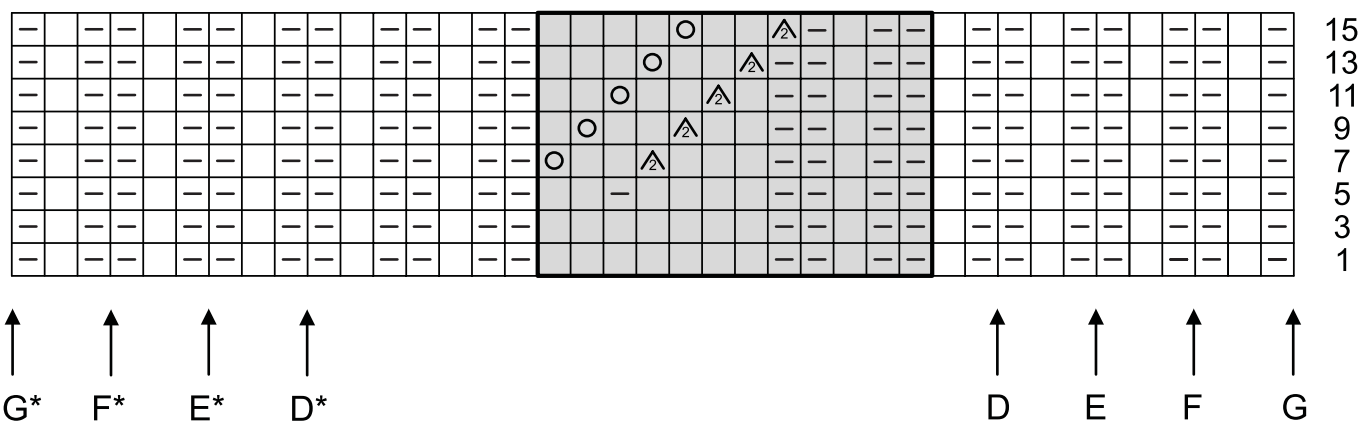


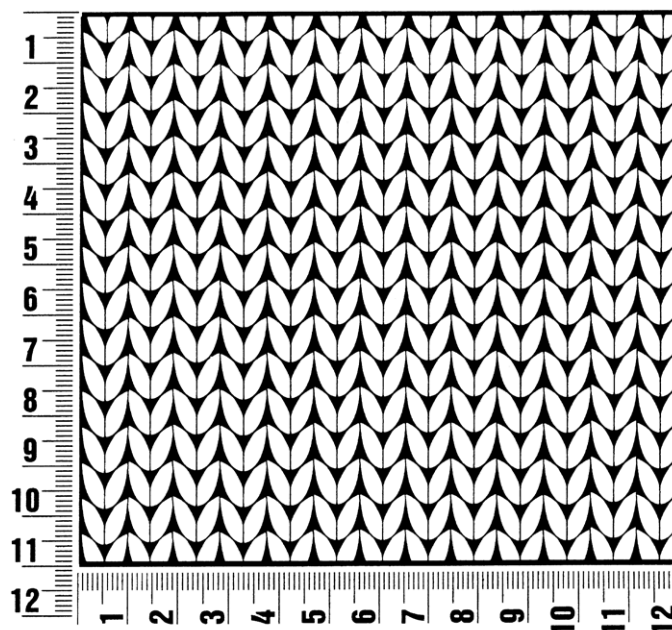
Chart key:

- = k1; p1 on next WS row / k1 on next rnd
- ▢ = p1; k1 on next WS row / p1 on next rnd
- = yo; ptbl on next WS row / ktbl on next rnd
- △ = p2tog; k1 on next WS row / p1 on next rnd
- ⊞ = sl 1 pwise wyif; k1 on next WS row

Gauge Swatch

Before you begin ...

...make a gauge swatch. Use the recommended needles, yarns and pattern stitch for your gauge swatch. It should measure approx. 12 cm x 12 cm. Cast-on and bind-off rows, as well as selvedge stitches should not be included in the measurement. Pin your swatch and block it as you would the finished pieces of the garment. Count stitches and rows over 10 cm. If your gauge swatch is too small, switch to larger needles. If your gauge swatch is too big, switch to smaller needles.



Abbreviations

beg = begin(ning) · **ch** = chain · **cont** = continue · **dec** = decreas(e)(ing) · **inc** = increas(e)(ing) · **k** = knit · **kwise** = as if to knit
meas = measures · **M1L** = lift strand between sts from front to back and knit this strand through the back loop · **M1R** = lift strand between sts from the back and knit this strand through the front loop · **patt** = pattern · **pm** = place marker · **p** = purl
pwise = as if to purl · **rem** = remain(ing) · **rep** = repeat(s) · **rev St st** = reverse stockinette stitch · **rnd(s)** = round(s) · **RS** = right side · **sc** = single crochet · **skp** = slip 1 stitch as if to knit, knit 1 stitch, pass slipped stitch over knitted stitch · **sk2p** = slip 1 stitch as if to knit, knit 2 together, pass slipped stitch over knitted stitch · **s2kp** = slip 2 stitches as if to knit, k 1 stitch, pass slipped stitches over knitted stitch · **sl** = slip · **st(s)** = stitch(es) · **St st** = stockinette stitch · **tbl** = through the back loop · **tog** = together · **wyib** = with yarn in back of work · **wyif** = with yarn in front of work · **WS** = wrong side · **yo(s)** = yarn over(s)

Publisher's Info

Publisher: Lana Grossa GmbH, Gaimersheim, www.lana-grossa.com

Photographer: Søren Jepsen