



© Lana Grossa GmbH

Design 35 – Lookbook 19

JACKET BASTA

JACKET · BASTA

Design 35 – Lookbook 19



Size 36/38 (40/42, 44/46, 48/50)

Instructions are given for first size. Figures in parenthesis refer to larger sizes. When only one figure is given, it applies to all sizes.

Materials: 600 (650, 700, 750) g of Lana Grossa **Basta** (50% Merino wool, 50% polyamide; 100 m/50 g) in Vanilla (col 32). Size 6 and 7 mm needles.

Rib patt: Row 1 (RS): *K1, p1*, rep *-*, end k1. Row 2 (WS): K2, *p1, k1*, rep *-* to last 3 sts, p1, k2. Rep rows 1 and 2 for rib patt.

St st: K on RS, p on WS.

Gauges: 13 sts and 20 rows = 10 x 10 cm in St st on size 7 mm needles; 18 sts and 20 rows = 10 x 10 cm in rib patt on size 6 mm needles.

Back: Using size 6 mm needles cast on 65 (71, 77, 83) sts. Work in rib patt for 4 cm, ending with a WS row. Change to size 7 mm needles. Work in St st until piece meas 35 cm from end of rib patt. Place marker in first and last st on last WS row to indicate beg of armholes. Cont until piece meas 18 (20, 22, 24) cm from armhole markers, ending with a WS row. Shape shoulders: At each shoulder edge bind off 5 (6, 7, 8) sts 3 times, 6 sts 1 time. Bind off rem 23 sts.

Left front: Using size 6 mm needles cast on 57 (61, 63, 67) sts. Work in rib patt for 4 cm, ending with a WS row. Change to size 7 mm needles. Work in St st until piece meas 14 (16, 18, 20) cm from end of rib patt, ending with a WS row. Shape front slope: Dec 1 st at end of next 33 RS rows, then every alt RS row 3 times = 21 (25, 27, 31) sts. At same time,

when same length as back to armhole, place armhole marker at right edge. After all front slope decs have been worked and piece meas 18 (20, 22, 24) cm from armhole marker, shape shoulder: At beg of RS rows bind off 5 (6, 7, 8) sts 3 times, 6 (7, 6, 7) sts 1 time. No sts rem.

Right front: Work same as left front, reversing all shaping.

Sleeves: Using size 6 mm needles cast on 37 (39, 41, 43) sts. Work in rib patt for 4 cm, ending with a WS row. Change to size 7 mm needles. Next RS (inc) row: Work in St st, increasing 0 (1, 2, 3) st(s) evenly across row = 37 (40, 43, 46) sts.

Cont in St st and shape sleeve: Inc 1 st at each end of every 16 (14, 12, 10)th row 5 (6, 7, 8) times = 47 (52, 57, 62) sts. Work even until piece meas 54 cm from cast-on. Bind off all sts.

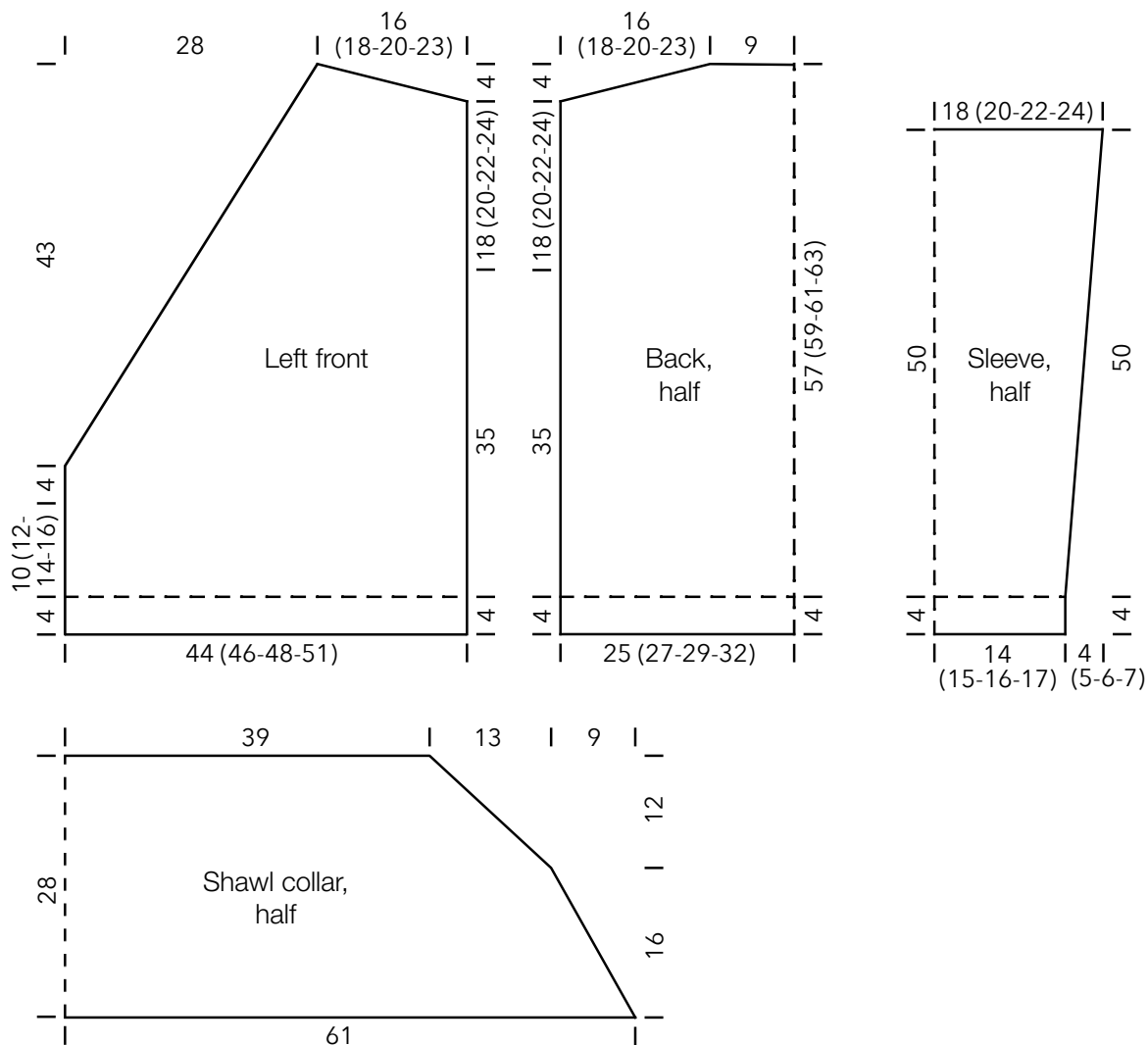
Ties: Make 2. Using size 6 mm needles cast on 9 sts. Work in rib patt for 90 (95, 100, 105) cm. Bind off all sts.

Shawl collar: Using size 6 mm needles cast on 221 sts. Work in rib patt for 2 rows, ending with a WS row. Shape collar: Dec 1 st at each end of next 16 RS rows = 189 sts, then dec 1 st at each end of next 24 rows = 141 sts. Work 1 WS row. Bind off all sts.

Finishing: Pin pieces to measurements and block. Sew ties to fronts, just below beginning of front slope shaping. Sew shoulder seams. Sew bound-off edge and shaped edges of shawl collar to fronts and back neck edge. Sew on sleeves between markers. Sew side and sleeve seams, leaving a 4 cm opening for tie at right side seam, 14 (15, 18, 20) cm up from cast-on edge.

JACKET • BASTA

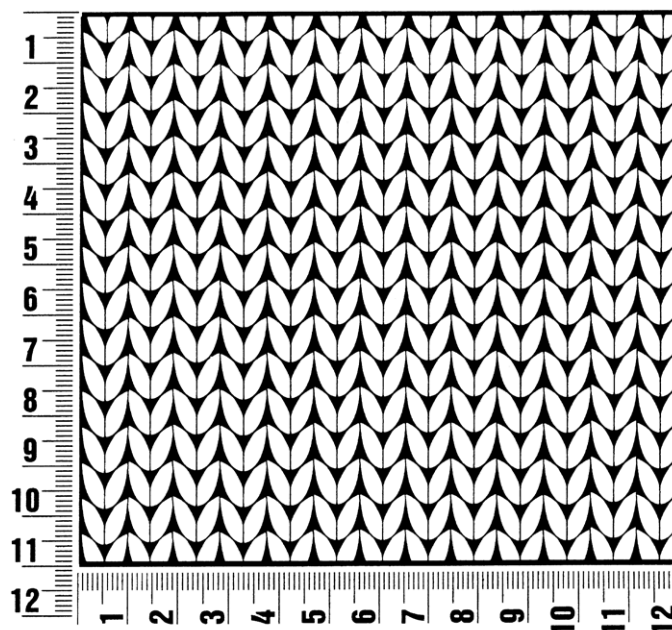
Design 35 – Lookbook 19



Gauge Swatch

Before you begin ...

...make a gauge swatch. Use the recommended needles, yarns and pattern stitch for your gauge swatch. It should measure approx. 12 cm x 12 cm. Cast-on and bind-off rows, as well as selvedge stitches should not be included in the measurement. Pin your swatch and block it as you would the finished pieces of the garment. Count stitches and rows over 10 cm. If your gauge swatch is too small, switch to larger needles. If your gauge swatch is too big, switch to smaller needles.



Abbreviations

beg = begin(ning) · **ch** = chain · **cont** = continue · **dec** = decreas(e)(ing) · **inc** = increas(e)(ing) · **k** = knit · **kwise** = as if to knit
meas = measures · **M1L** = lift strand between sts from front to back and knit this strand through the back loop · **M1R** = lift strand between sts from the back and knit this strand through the front loop · **patt** = pattern · **pm** = place marker · **p** = purl
pwise = as if to purl · **rem** = remain(ing) · **rep** = repeat(s) · **rev St st** = reverse stockinette stitch · **rnd(s)** = round(s) · **RS** = right side · **sc** = single crochet · **skp** = slip 1 stitch as if to knit, knit 1 stitch, pass slipped stitch over knitted stitch · **sk2p** = slip 1 stitch as if to knit, knit 2 together, pass slipped stitch over knitted stitch · **s2kp** = slip 2 stitches as if to knit, k 1 stitch, pass slipped stitches over knitted stitch · **sl** = slip · **st(s)** = stitch(es) · **St st** = stockinette stitch · **tbl** = through the back loop · **tog** = together · **wyib** = with yarn in back of work · **wyif** = with yarn in front of work · **WS** = wrong side · **yo(s)** = yarn over(s)

Publisher's Info

Publisher: Lana Grossa GmbH, Gaimersheim, www.lana-grossa.com
Photographer: Wilfried Wulff, www.wilfriedwulff.com