

Viking Bjørk

Sweater, trousers and blanket 1005-2

Viking **BJØRK**, 90% cotton, 10% superwash merino wool,
 Viking **ALPACA SILK**, 50% alpaca, 50% silk, 50 g ball

Size	3/6m	9m	12/18m	2	4	yrs
SWEATER						
Chest	52	56	60	64	68	cm
	20.5	22	23.6	25.2	26.8	in
Length	25	27	33	36	40	cm
	9.8	10.6	13	14.2	15.7	in
Sleeve length	20	22	25	28	31	cm
	7.9	8.7	9.8	11	12.2	in
Leg length	18	21	25	29	35	cm
	7.9	9.1	9.8	11.4	13.8	in

Materials

SWEATER

White, 500 (Light Blue, 520) 3 3 4 4 5 balls

Trousers

White, 500 (Light Blue, 520) 2 2 3 3 4 balls

BLANKET

White, 500 6 balls

CARDIGAN

Blue, 523 3 3 4 4 5 balls

Light Violet, 567 2 2 2 3 3 balls

White, 500 1 1 1 2 2 balls

Double pointed needles and circular needle size 3 mm – US 2 or 3 – UK/Canadian 11.

5 buttons for the cardigan with hood.

Elastic for the trousers.

Gauge: 25 sts = approx. 10 cm/4 in over St st, using needles size 3 mm. Check your tension to ensure success.

Patt panels:

Report 1 = *patt A over 10 sts – patt B over 15 sts – patt A over 10 sts – patt D over 15 sts – patt A over 10 sts – patt E over 15 sts*, end with patt A over 10 sts. Work panels as established until the charts are completed.

Report 2 = *patt A – patt C*, rep *-* , end with patt A.

Report 3 = *patt A – patt D –patt A – patt E – patt A –patt B*, end with patt A. Work panels as established until the charts are completed.

Report 4 = *patt A – patt C*, rep *-* , end with patt A.

Report 5 = *patt A –patt E – patt A – patt B – patt A – patt D*, end with patt A. Work panels as established until the charts are completed.

Report 6 = *patt A – patt C*, rep *-* , end with patt A.

Seed st:

1st row: *K1, P1*.

2nd row: P all k-sts, K all p-sts.

Rep 2nd row.

SWEATER

Back: Using needles size 3 mm, cast on 65-71-75-81-85 sts. Work approx. 3 cm/1.2 in (same for all sizes), in Seed st. P 1 row (= WS), and adjust evenly across the row the number of sts to be 85-89-95-101-105 sts. Cont working in patt as foll: patt C over 0-2-5-8-10 sts (at each edge throughout the back), report 1 over 85 mid sts (end with patt C over 0-2-5-8-10 sts). Cont with reports 2, 3, 4, 5 and 6, then beg from report 1 again. When work measures approx. 25-27-33-36-40 cm/9.8-10.6-13-14.2-15.7 in (and you have completed a square or half a square), bind off.

Front: Work same as for back. When work measures approx. 20.22-28-30-34 cm/7.9-8.7-11-11.8-13.4 in, bind off 23-27-31-35-39 mid sts for neck edge. Finish each side separately. Bind off at neck edge every 2nd row 1x3, 1x2, 1x1 sts. When work measures the same as back, bind off sts. Work same for the other side, rev all shaping.

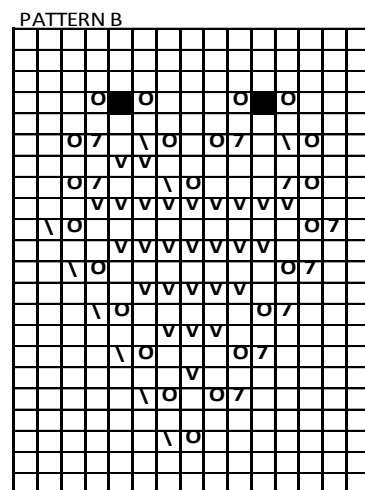
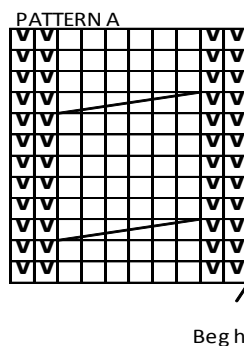
Sleeves: Using needles size 3 mm, cast on 43-45-47-51-53 sts. Work in Seed st same as for body. P 1 row (= WS), and adjust evenly across the row the number of sts to be 65-65-80-80-80 sts. Cont working in patt as foll: *patt C over 5 sts – patt A over 10 sts*, rep *-* across the row, end with patt C over 5 sts. When work measures approx.20-22-25-28-31 cm/7.9-8.7-9.8-11-12.2 in, or desired length, bind off. Work same for the other sleeve.

Finishing: Sew shoulder and side seams leaving an opening of approx. 11-11-14-14-14 cm/4.3-4.3-5.5-5.5-5.5 in for armholes. Sew sleeve seams.

Neck border: Pick or knit up around the neck edge approx. 76-80-84-88-92 sts. Work in rnds 2½ cm/1 in (same for all sizes), in Seed st. Bind off in Seed st. Sew on sleeves, and weave in ends on WS.

Crochet picot edge round the hem line, sleeves and neck

border: Beg from side, attach the yarn with 1 sl st, work 1 rnd in sc (take care that the edge doesn't turn out too tight). Work next rnd as foll: *Ch4, 1sl st to 1st ch, 1 sc to each next 2 sts*, rep *-* across the rnd.



□ = K on RS, P on WS

▣ = P on RS, K on WS

○ = vo

◊ = K2tog

■ = Sl1, K2tog, pssso

□ = K2togtbl

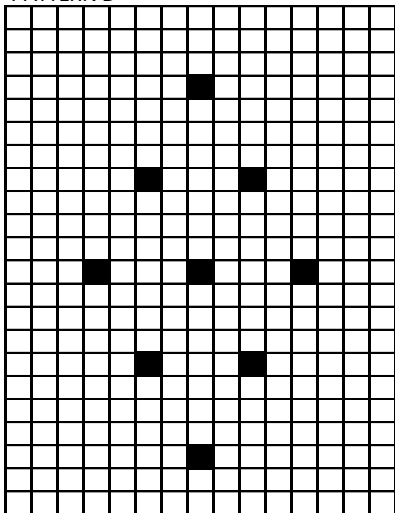
▬ = Sl3 sts on cn, hold to front, K3, K3 from cn

PATTERN C



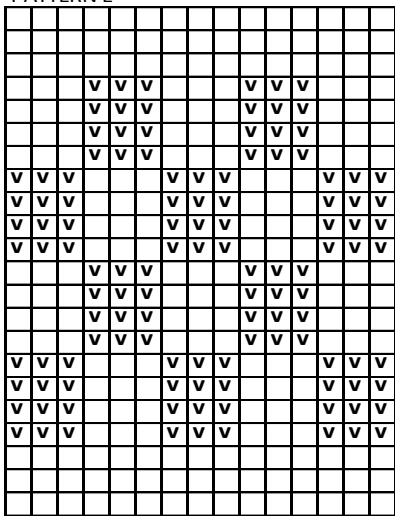
Beg her

PATTERN D



■ = 1 bobble: K same st 5 times, K1tfl, K1tbl, K1tfl, K1tbl, K1tfl. Work 3 rows back and forth in St st. K5tog.

PATTERN E



Beg here

□ = K on RS, P on WS

∇ = P on RS, K on WS

TROUSERS

Beg from the waist. Using circular needle size 3 mm, cast on 120-120-130-140-140 sts. Work 6 cm/2.4 in, in patt C (Seed st). Place markers each side, 60-60-65-70-70 sts for both front and back. Work short rows to rise the back of the trousers: Beg from mid back, K7-7-8-8-8, turn P14-14-16-16-16, turn. Cont working in the same way, each time 7-7-8-8-8 sts more, 4 times more at each side. K 1 rnd over all sts. Cont working in St st until work measures 17-19-20-21-22 cm/6.7-7.5-7.9-8.3-8.7 in (measured from cast-on edge), or desired length. Place markers mid front and back. Inc 1 st on both sides of the mid

markers every 2nd rnd altog 7 times = 148-148-158-168-168 sts. Divide the work in two parts for the legs, 74-74-79-84-84 sts for each leg. Finish each leg separately. Cont working in St st, and place a marker on the inner seam. Dec 1 st on both sides of the marker approx. every 1½-2-2-2-2 cm/0.6-0.8-0.8-0.8-0.8 in until 56-58-61-62-64 sts rem. When work measures approx. 3 cm/1.2 in less than total length, K 1 rnd and adjust the number of sts evenly across the rnd to be 50-52-54-56-58 sts. Work 3 cm/1.2 in, in patt C. Bind off loosely. Work same for the other leg.

BLANKET (50x70 cm/19.7x27.6 in)

Using needles size 3 mm, cast on 125 sts. Work 3 cm/1.2 in, in Seed st. P1 row (= WS), and adjust the number of sts evenly across the row to be 174 sts. Cont working in patt as foll: Beg with RS row, patt C over 7 sts, rep patt report 1 over the next 160 sts (rep *-* twice across the row), end with patt A + patt C over 7 sts. Rep reports 1-6 until blanket measures approx. 67 cm/26.4 in (end with a complete square). Adjust the number of sts evenly across the row to be 125 sts. Work 3 cm/1.2 in, in Seed st. Bind off. Crochet a picot edge around the blanket.

CARDIGAN WITH HOOD

Size	3/6	9	12/18	months	2	4	yrs
Chest	51	55	60		64	68	cm
	20.1	21.7	23.6		25.2	26.8	in
Length	25	27	33		36	40	cm
	9.8	10.6	13		14.2	15.7	in
Sleeve length	22	24	26		30	33	cm
	8.7	9.4	10.2		11.8	13	in

Gauge: 25 sts = approx. 10 cm/4 in over St st, using needles size 3 mm. Check your tension to ensure success.

Back: Using needles size 3 mm, cast on 60-64-72-76-80 sts. Work 3 cm/1.2 in, in K2,P2 rib. P 1 row (= WS), and adjust the number of sts evenly across the row to be 74-82-86-90-98 sts. Beg the patt as foll:

K4, P4, K4 = **3/6 months**

P4, K4, P4, K4 = **9 months**

K2, P4, K4, P4, K4 = **12/18 months**

K4, P4, K4, P4, K4 = **2 yrs**

P4, K4, P4, K4, P4, K4 = **4 yrs**

All sizes: Work cable patt as charted over next 50 sts, end as beg of the row, but work sts in rev order. Cont working back and forth as established until work measures 25-27-33-36-40 cm/9.8-10.6-13-14.2-15.7 in. Bind off.

Right front: Using needles size 3 mm, cast on 32-32-36-40-44 sts. Work approx. 3 cm/1.2 in, in K2,P2 rib. P 1 row (= WS) and adjust the number of sts evenly across the row to be 48-51-53-56-58 sts. Beg from RS, work 6 sts in Garter st (= front edge), cable patt as charted over next 37 sts, and end as foll:

K4, P1 = **3/6 months**

K4, P4 = **9 months**

K4, P4, K2 = **12/18 months**

K4, P4, K4, P1 = **2 yrs**

K4, P4, K4, P3 = **4 yrs**

Cont working back and forth as established until work measures 21-22-28-31-34 cm/8.3-8.7-11-12.213.4 in, bind off first 13-15-17-19-19 sts for neck edge. Bind off at neck edge every 2nd row 1x5 sts, 1x3 sts and 1x2 and 1x1 sts (same for all sizes). Bind off sts when work measures same as back. Work same for left front, rev all shaping.

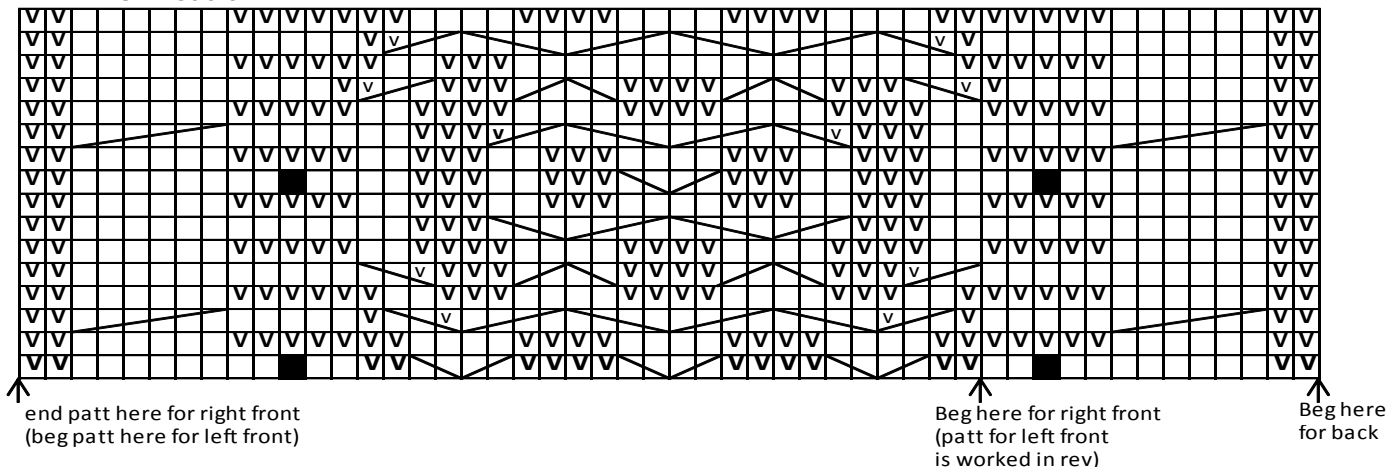
Sleeves: Using needles size 3 mm, cast on 52-60-60-68-68 sts. every 2½-4-3-4½-2½ cm/1-1.6-1.2-1.8-1 in, until you have 66-70-76-80-90 sts on a row. Work back and forth in K4,P4 rib. Inc 1 st at each edge approx. 22-24-26-30-33 cm/8.7-9.4-10.2-11.8-13 in, or desired length (Note! Approx. 3-4 cm/1.2-1.6 in will be turned on RS), bind off.

Finishing: Sew shoulder and side seams.

Hood: Using needles size 3 mm, pick or knit up along the neck edge approx. 100-100-108-108-116 sts. Work back and forth K4,P4 rib inside 4 sts at both edges (= worked in Garter st). When work measures approx. 19-21-24-26-28 cm/7.5-8.3-9.4-10.2-11 in (or desired length), slip sts on a thread or bind off. Join the top seam of the hood.

Set in sleeves, and weave in ends on WS.

PATTERN OVER 50 STS



□ = K on RS, P on WS

▽ = P on RS, K on WS

■ = 1 bobble: K same st 5 times: K1tfl, K1tbl, K1tfl, K1tbl, K1tfl. Work 3 rows back and forth in St st. K5tog.

↘ = Sl 1 st on cn, hold to back, K1, K1 from cn.

↙ = Sl 1 st on cn, hold to front, K 1 K 1 from cn.

↘▽ = Sl 1 st on cn, hold to back, K2, P1 from cn.

↙▽ = Sl 2 sts on cn, hold to front, P1, K2 from cn.

↘↘ = Sl 2 sts on cn, hold to back, K2, K2 from cn.

↙↙ = Sl 2 sts on cn, hold to front, K2, K2 from cn.

↘↘↘ = Sl 3 sts on cn, hold to front, K3, K3 from cn.